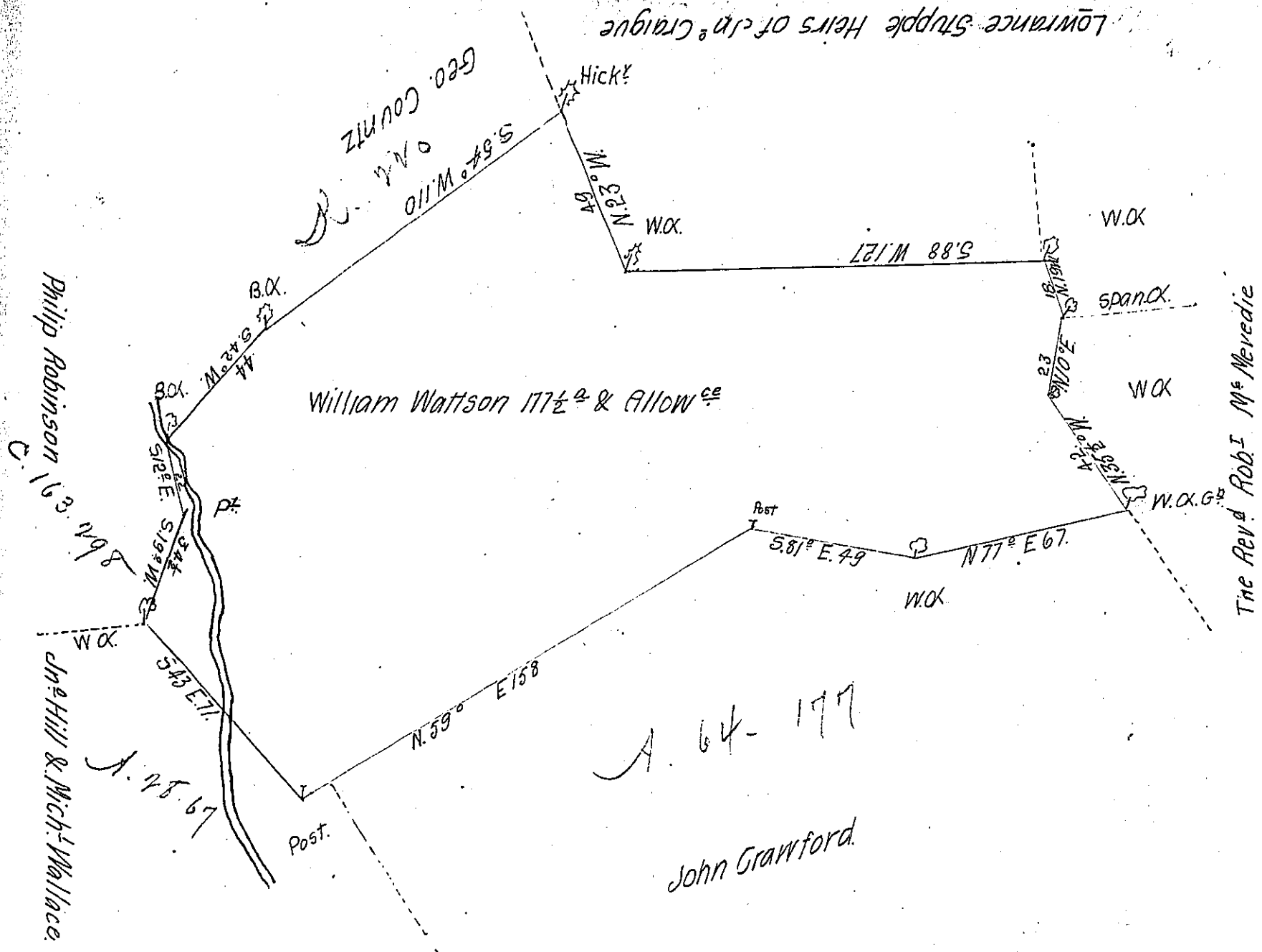


FORM No 1.



Survey'd to William Watson on the 2<sup>d</sup> day of November 1765 the above  
 discribed tract of One Hundred Seventy Seven Acres & a Half & the  
 usuall Allowance of six  $\frac{1}{2}$  C<sup>t</sup> Situate in Hanover Town<sup>p</sup> Lancaster County  
 By Application of the 27<sup>th</sup> day of August 1765.

N<sup>o</sup> 642

$\phi$  Bartrem Galbraith D.S.

Todn<sup>o</sup> Lukens Esq<sup>r</sup> }  
 surv<sup>r</sup> Gen<sup>l</sup> }

IN TESTIMONY that the above is a copy of the original remaining on file in  
 the Department of Internal Affairs of Pennsylvania, made  
 conformably to an Act of Assembly approved the 16th day of  
 February, 1833, I have hereunto set my Hand and caused  
 the Seal of said Department to be affixed at Harrisburg,  
 this fifth day of June 1907

*Henry Howell*

Secretary of Internal Affairs.